

GB Instruction for use
DK Brugsanvisning

POWERTEX Beam Clamp PBC-S1



User Manual

POWERTEX Beam Clamp PBC-S1 1 – 10 ton Assembly / Instruction for use (GB) (Original instructions)

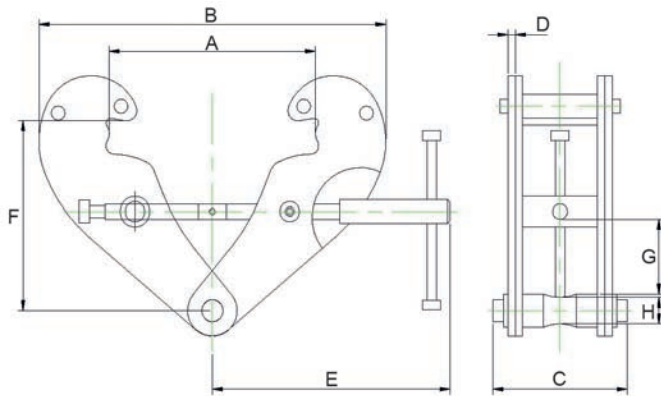
Read through these user instructions carefully before using the beam clamp. Improper operation may lead to hazardous situations!

The POWERTEX beam clamp is designed for mounting on the lower flange of an I-beam for suspending a load or lifting device. The beam clamp is fixed in position with a right-hand and left-hand threaded rod in a scissor construction.

Safety rules

- The beam on which the clamp is to be mounted must be checked by a competent person. This person must assess the beam's load bearing capacity and fixings and its suitability for the purpose.
- Check the beam clamp before use for function and any cracking, deformation or wear.
- Load on the beam clamp must not exceed the maximum load indicated on the rating plate.
- The beam clamp must only be used for beams with a flange width within the range indicated on the rating plate.
- The clamp must be fixed to the beam above the load's centre of gravity.
- Dynamic stresses must be avoided.
- Inclined pulls are not permitted.
- Working temperature: -10°C to +50°C.

Dimensioned sketch



Technical data

Model	WLL (ton)	I beam width range (mm)	A max.	B min.	B max.	C	D	E	F min.	F max.	G min.	H	Weight (kg)
PBC-S1	1	80-240	270	183	370	94	4	198	100	154	22	20	3,5
PBC-S1	2	80-240	270	183	370	102	6	198	100	154	22	20	4,5
PBC-S1	3	90-330	355	243	500	132	8	263	148	219	46	22	9,5
PBC-S1	5	90-330	355	243	500	142	10	263	148	219	43	28	11
PBC-S1	10	90-350	364	269	521	180	12	285	165	239	51	38	16

Safety factor: 4:1
 Static test coefficient: WLL x 2
 Generally according to EN 13155

Mounting

Open the beam clamp by unscrewing the threaded rod with the handle sufficiently to allow the clamp to enclose the beam. Screw up the beam clamp centrally over the load's centre of gravity. Make sure the arms on the beam clamp have a secure grip on the beam flange. (See dimensioned drawing).

The load or suspension hook on the lifting device must hang centrally from the bowed centre of the suspension bolt.

Continuous maintenance - lubrication

Bearings and threaded sections and the surface of the suspension bolt in contact with the load hook must be cleaned and lubricated as necessary. Periodic checks must normally be carried out yearly to detect and remedy any faults. Damaged parts must be replaced with original POWERTEX parts. A set of threaded rods and nuts can be ordered through your dealer.

Contact your dealer for spare parts in general.

Replacing the threaded rod.

- 1 Open the beam clamp as far as it will go.
- 2 Knock the locking pin out of the handle.
- 3 Completely unscrew the threaded rod.
- 4 Remove the old nuts by pressing them out of the beam clamp's arms. Dismantle and clean the spacers.
- 5 Mount the new nuts together with the spacers.
- 6 Oil and screw the new threaded rod into the nuts. Make sure both threads go in simultaneously.
- 7 Screw up until the handle can be mounted and lock with the locking pin.
- 8 Continue screwing to the desired position.

Instruction Grey Label

To change your new POWERTEX Beam Clamp to Blackline: If the product should be used in dark environments, add the grey label on the product's name plate like this. The data on the nameplate should ALWAYS be visible, and must NOT be covered.

If the product is modified in any way, or if it is combined with a non-compatible product / component, SCM Citra OY takes no responsibility for the consequences in regard to the safety of the product.

EC Declaration of conformity

SCM Citra OY
 Asessorinkatu 3-7
 20780 Kaarina, Finland
 www.powertex-products.com
 hereby declares that the POWERTEX product as described above is in compliance with EC Machinery Directive 2006/42/EC & EN 13155.

UK Declaration of conformity

SCM Citra OY
 Asessorinkatu 3-7
 20780 Kaarina, Finland
 www.powertex-products.com
 hereby declares that the POWERTEX product as described above is in compliance with the Supply of Machinery (Safety) Regulations 2008 & BS EN 13155.

POWERTEX Bjælkeklemme PBC-S1 1 – 10 ton

Montering / Brugsanvisning (DK)

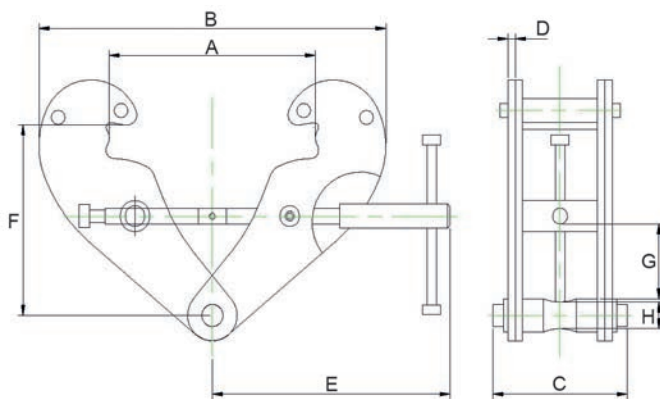
Læs denne brugsanvisning, før bjælkeklemmen tages i brug. Forkert brug kan medføre fare!

POWERTEX bjælkeklemme er beregnet til montering på den nederste flange af en I-bjælke mhp. ophængning af last eller løfteanordning. Bjælkeklemmen spændes fast ved hjælp af en stang med højre- og venstregevind i en saksekonstruktion.

Sikkerhedsanvisninger

- Den bjælke, som bjælkeklemmen skal monteres på, skal være kontrolleret af en kvalificeret person. Denne person skal vurdere bjælkens bæreevne og fastgørelser samt dens egnethed til formålet.
- Før brug kontrolleres bjælkeklemmen for evt. revner, deformation og slitage, ligesom dens funktion kontrolleres.
- Bjælkeklemmen må ikke belastes med mere end maks.-lasten iht. typeskiltet.
- Bjælkeklemmen må kun bruges til bjælker med en flangebredde, der ligger inden for det angivne område, jf. typeskiltet.
- Klemmen skal være fastgjort på bjælken lige over lastens tyngdepunkt.
- Dynamiske påvirkninger skal undgås.
- Skævtrækning er ikke tilladt.
- Arbejdstemperatur: -10°C to +50°C.

Målskitse



Tekniske data

Model	WLL ton	I bjælkebredde spændvidde (mm)	A maks.	B min.	B maks.	C	D (mm)	E	F min.	F maks.	G min.	H	Vægt (kg)
PBC-S1	1	80-240	270	183	370	94	4	198	100	154	22	20	3,5
PBC-S1	2	80-240	270	183	370	102	6	198	100	154	22	20	4,5
PBC-S1	3	90-330	355	243	500	132	8	263	148	219	46	22	9,5
PBC-S1	5	90-330	355	243	500	142	10	263	148	219	43	28	11
PBC-S1	10	90-350	364	269	521	180	12	285	165	239	51	38	16

Sikkerhedsfaktor: 4:1

Statisk test coefficient: WLL x 2

Standard: EN 13155

Montering

Bjælkeklemmen åbnes ved, at man skruer gevindstangen med håndtaget så meget op, at klemmen kan entre bjælken. Bjælkeklemmen fastskrues lige over lastens tyngdepunkt. Sørg for, at bjælkeklemmens arme får et sikkert greb om bjælkens flange. (Se måltegningen). Lasten eller løfteanordningens ophængningskrog skal hænge lige på ophængningsbøjleens neddrejede center.

Løbende vedligeholdelse – smøring

Lejer, gevindstang og ophængningsbøjle's kontaktflade mod lastkrogen skal rengøres og smøres ved behov. Der skal foretages regelmæssig kontrol, som hovedregel en gang om året, så eventuelle dysfunktioner kan blive opdaget og afhjulpel. Beskadigede dele skal udskiftes med originale POWERTEX-dele. Et gevindstangssæt med møtrikker kan bestilles hos forhandleren. Kontakt generelt din forhandler for reservedele.

Udskiftning af gevindstangen

- 1 Åbn bjælkeklemmen så meget den kan.
- 2 Bank låsepinden ud af håndtaget.
- 3 Skru gevindstangen helt løs.
- 4 Fjern de gamle møtrikker ved at trykke dem ud af bjælkeklemmens arme. Demontér afstandsstykkerne og rengør dem.
- 5 Montér de nye møtrikker sammen med afstandsstykkerne.
- 6 Smør den nye gevindstang og skru den ind i møtrikkerne. Sørg for, at de to gevind entrer samtidigt.
- 7 Stram så meget til, så håndtaget kan monteres, og lås med låsepinden.
- 8 Fortsæt med at skrue til den ønskede indstilling.

Instruktion grå label

Sådan ændrer du din nye POWERTEX Bjælkeklemme til Blackline: Hvis produktet skal anvendes i mørke omgivelser, påfør grå etiket på produktets typeskilt som denne. Dataene på typeskiltet skal ALTID være synlige og må IKKE tildækkes.

Hvis produktet modificeres på nogen måder, eller kombineres med ikke-kompatible produkter/komponenter, tager SCM Citra OY ingen ansvar for konsekvenserne i forhold til sikkerheden ved produktet.

Overensstemmelseserklæring

SCM Citra OY
Assessorinkatu 3-7
FI-20780 Kaarina
Finland
www.powertex-products.com

erklærer hermed, at POWERTEX-produktet som beskrevet ovenfor er i overensstemmelse med EC Maskindirektivet 2006/42/EF og EN 13155.

CertMax+

The CertMax+ system is a unique leading edge certification management system which is ideal for managing a single asset or large equipment portfolio across multiple sites. Designed by the Lifting Solutions Group, to deliver optimum asset integrity, quality assurance and traceability, the system also improves safety and risk management levels.



Marking

The POWERTEX Beam Clamp is equipped with a RFID (Radio-Frequency Identification) tag, which is a small electronic device, that consist of a small chip and an antenna. It provides a unique identifier for the beam clamp.



The POWERTEX Beam Clamp is **CE** and **UKCA** marked.

Standard: EN 13155

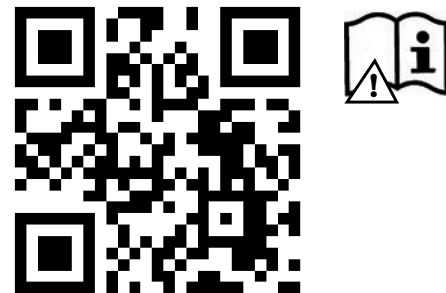


User Manuals

You can always find the valid and updated User Manuals on the web. The manual is updated continuously and valid only in the latest version.

NB! The English version is the Original instruction.

The manual is available as a download under the following link:
www.powertex-products.com/manuals



Product compliance and conformity

SCM Citra OY
Asessorinkatu 3-7
20780 Kaarina
Finland
www.powertex-products.com



POWERTEX

www.powertex-products.com